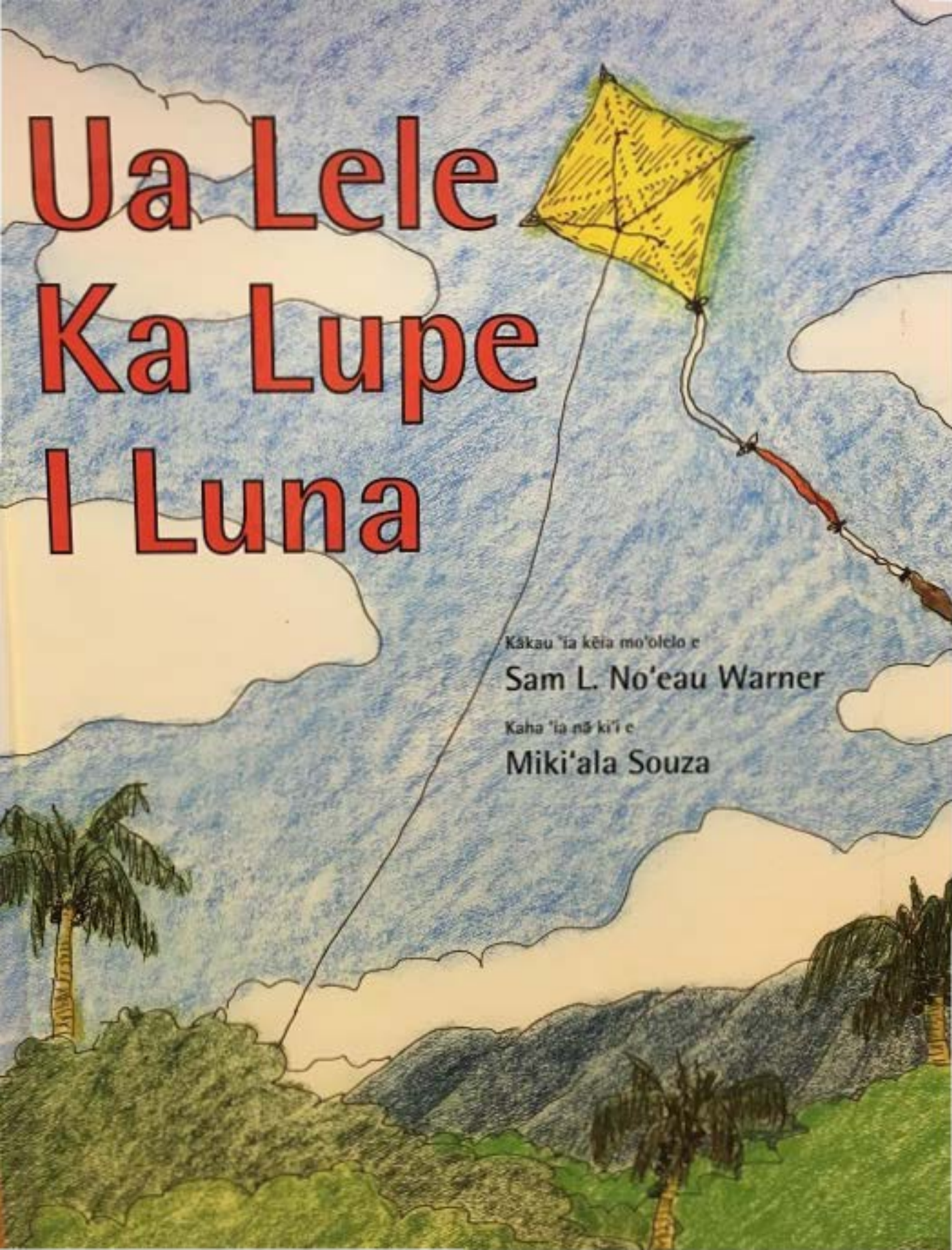


## **IMPORTANT NOTICE**

This document contains copyrighted material. We are making this material available in an effort to support teaching and learning for this Hawaiian Language course, we believe this constitutes a 'fair use' of the material. Please limit the use of this document to include sharing, duplicating, and printing, to the course work and assignments expressly related to this Hawaiian Language class.

If you wish to use this copyrighted material for your own purposes that go beyond 'fair use', you must obtain permission from the copyright owner.



# Ua Lele Ka Lupe I Luna

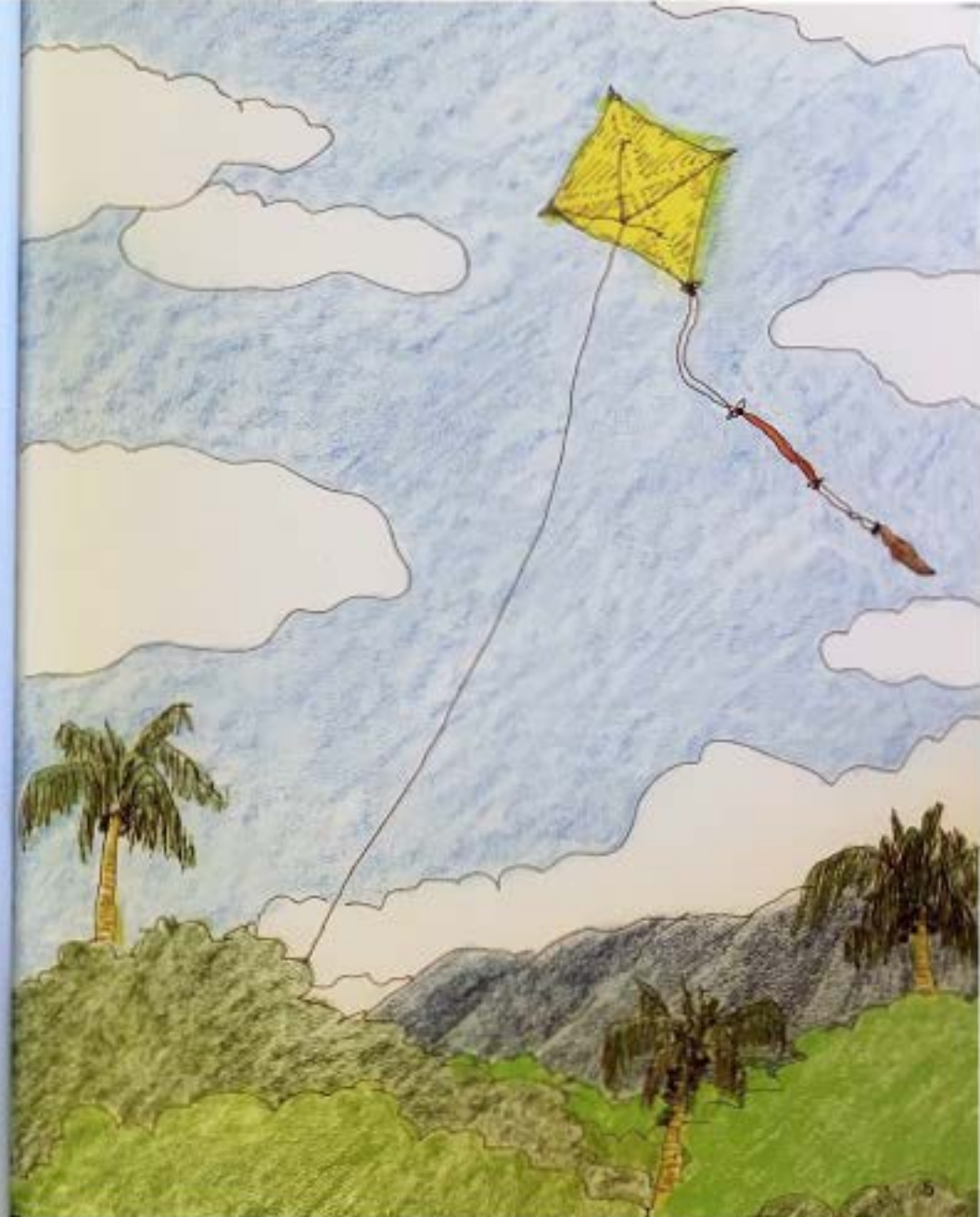
Kākau 'ia kēia mo'olelo e

**Sam L. No'eau Warner**

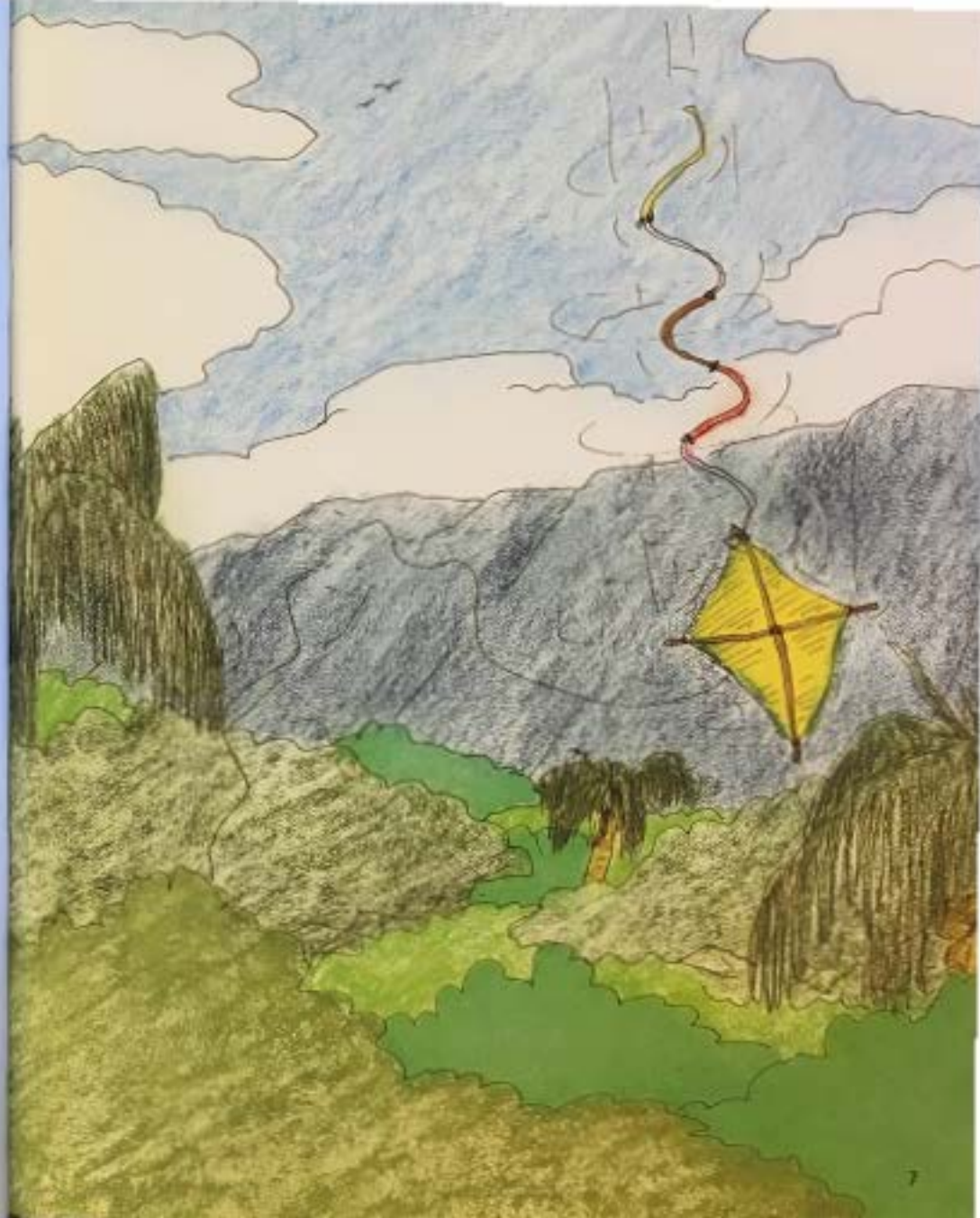
Kaha 'ia nā ki'i e

**Miki'ala Souza**

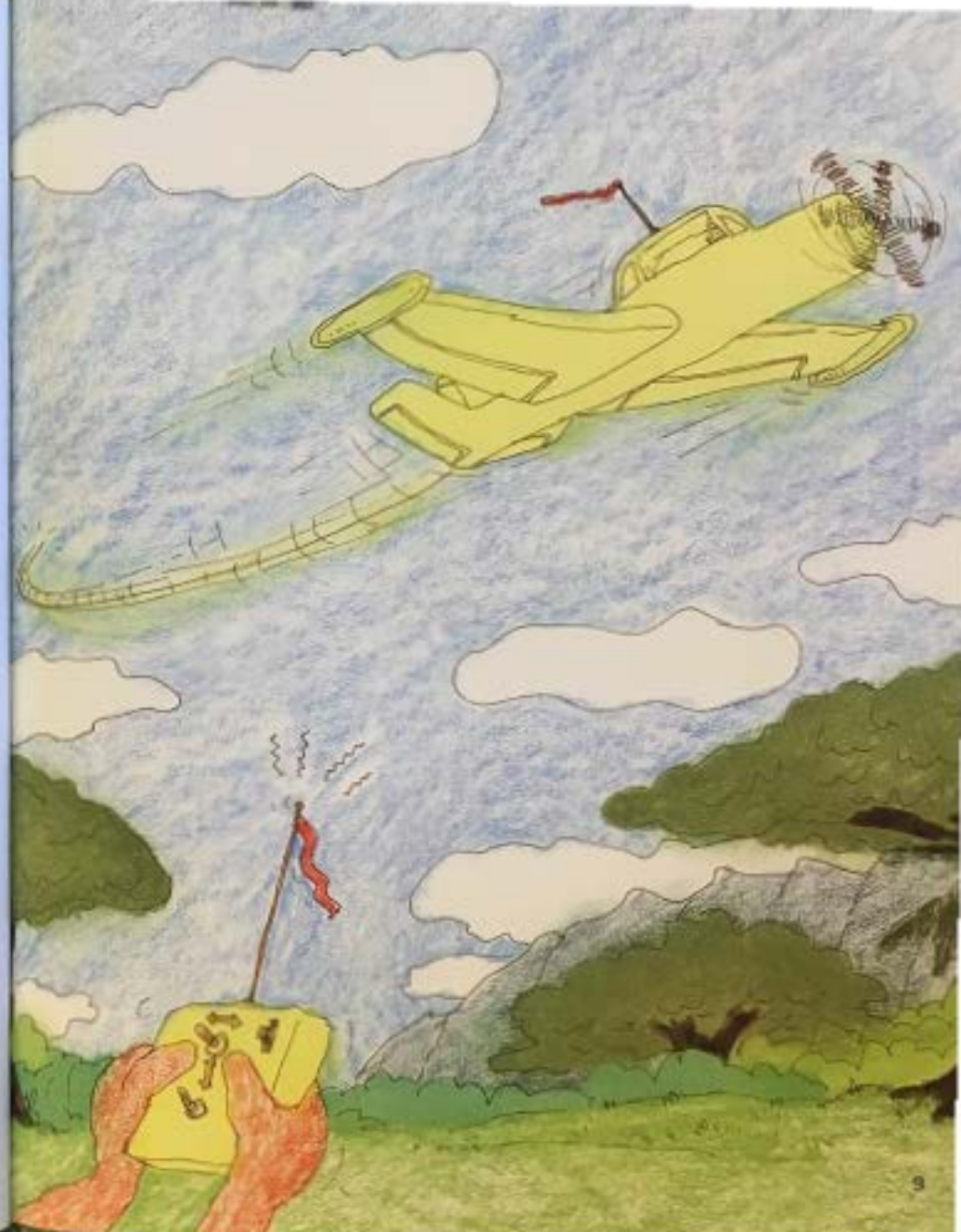
Ua lele ka lupe i luna.



Akā, ua hā'ule ihola i lalo.



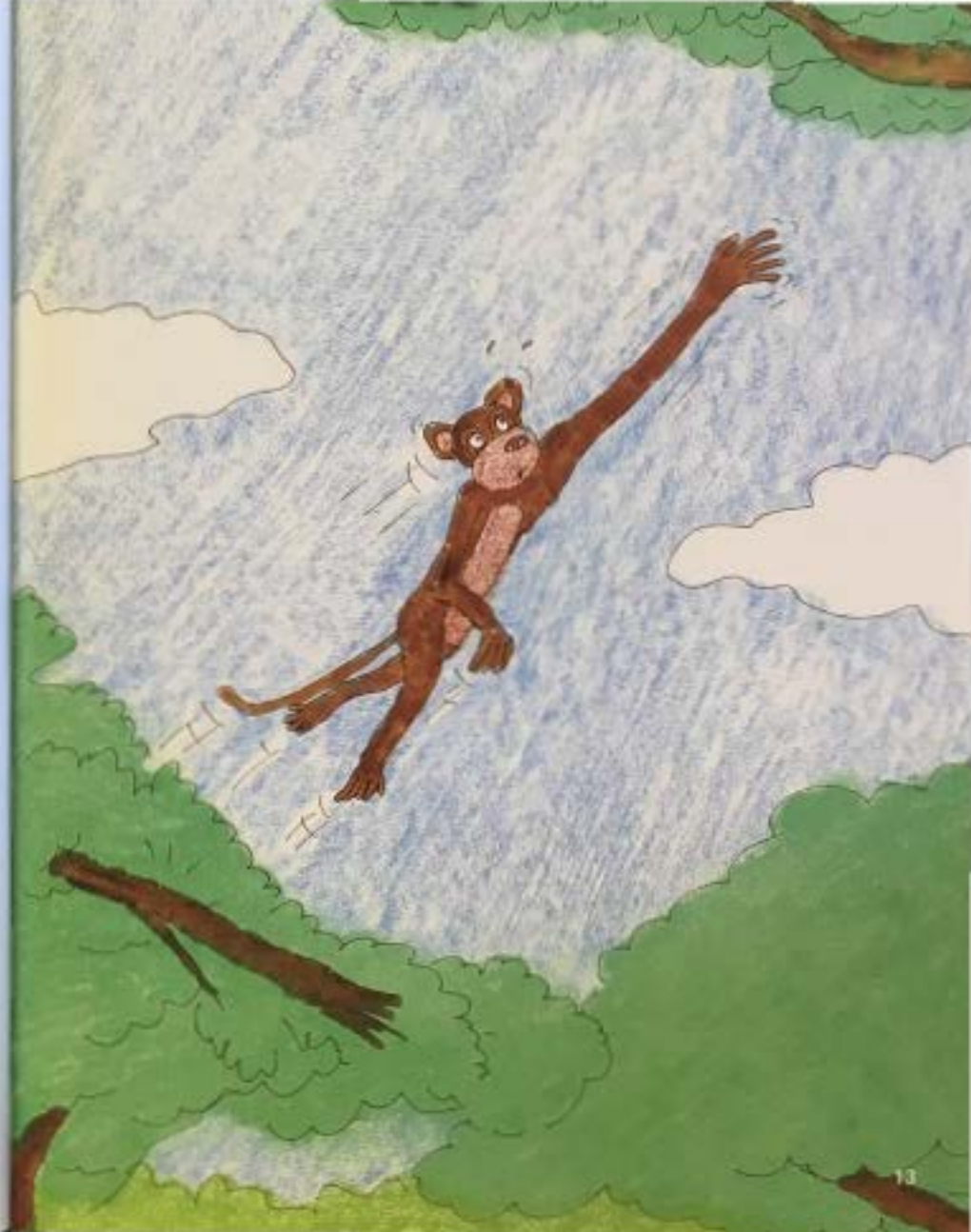
Ua lele ka mokulele i luna.



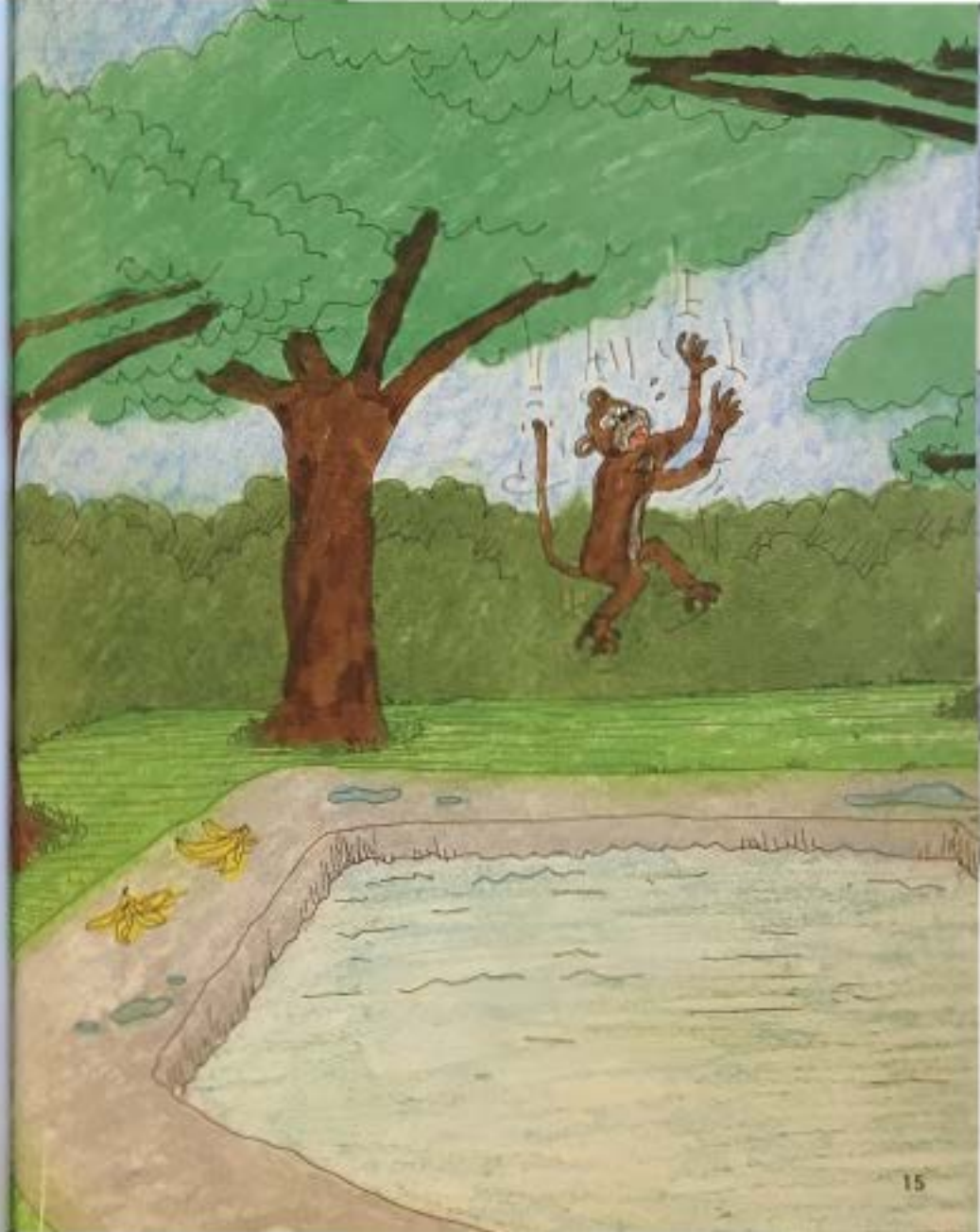
A hā'ule ihola i lalo.



Ua lele ke keko i luna.

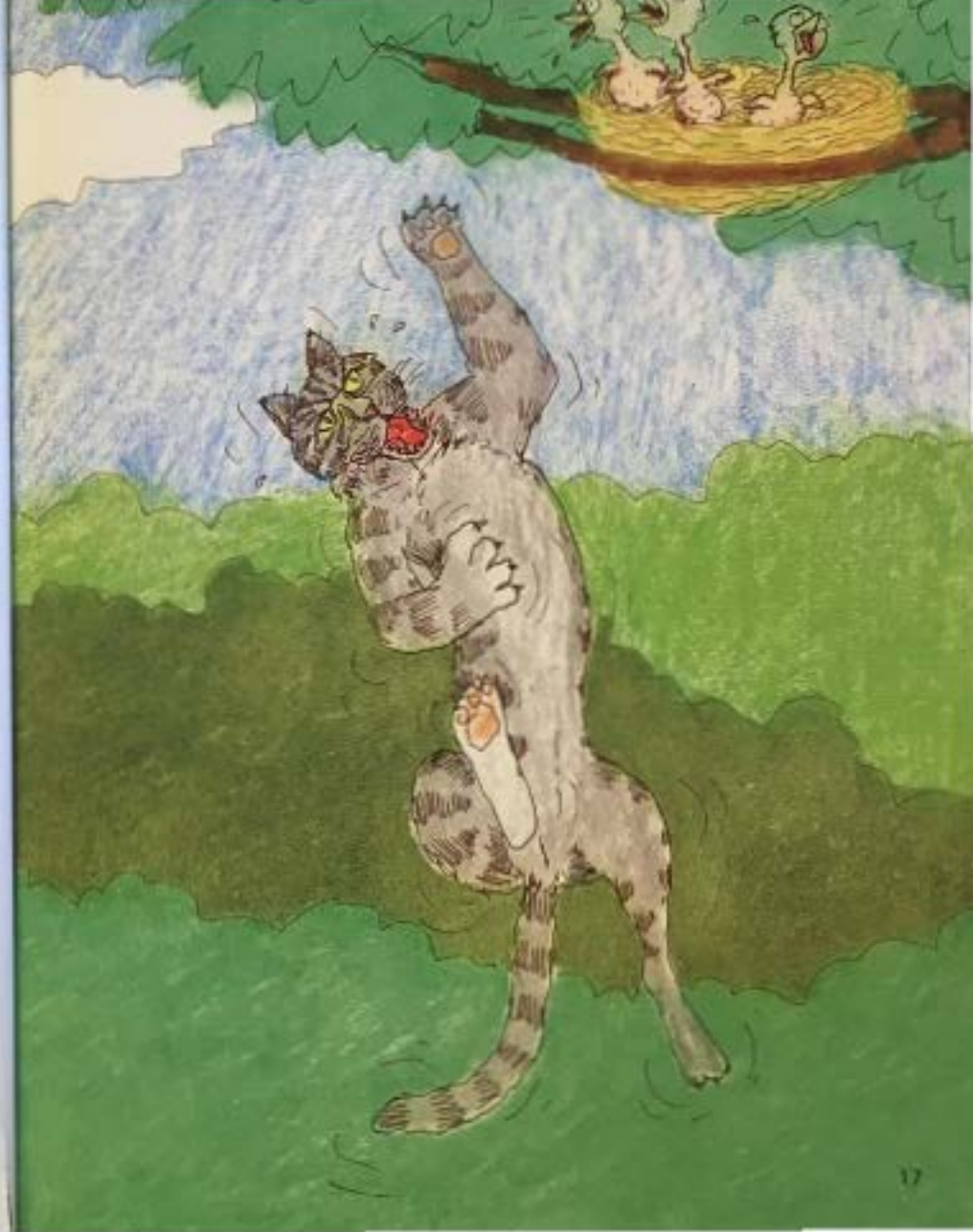


A hā'ule ihola i lalo.





Ua lele ka pōpoki i luna.



A hā'ule ihola i lalo.  
Akā, ua ku'u pono ihola 'o ia.

