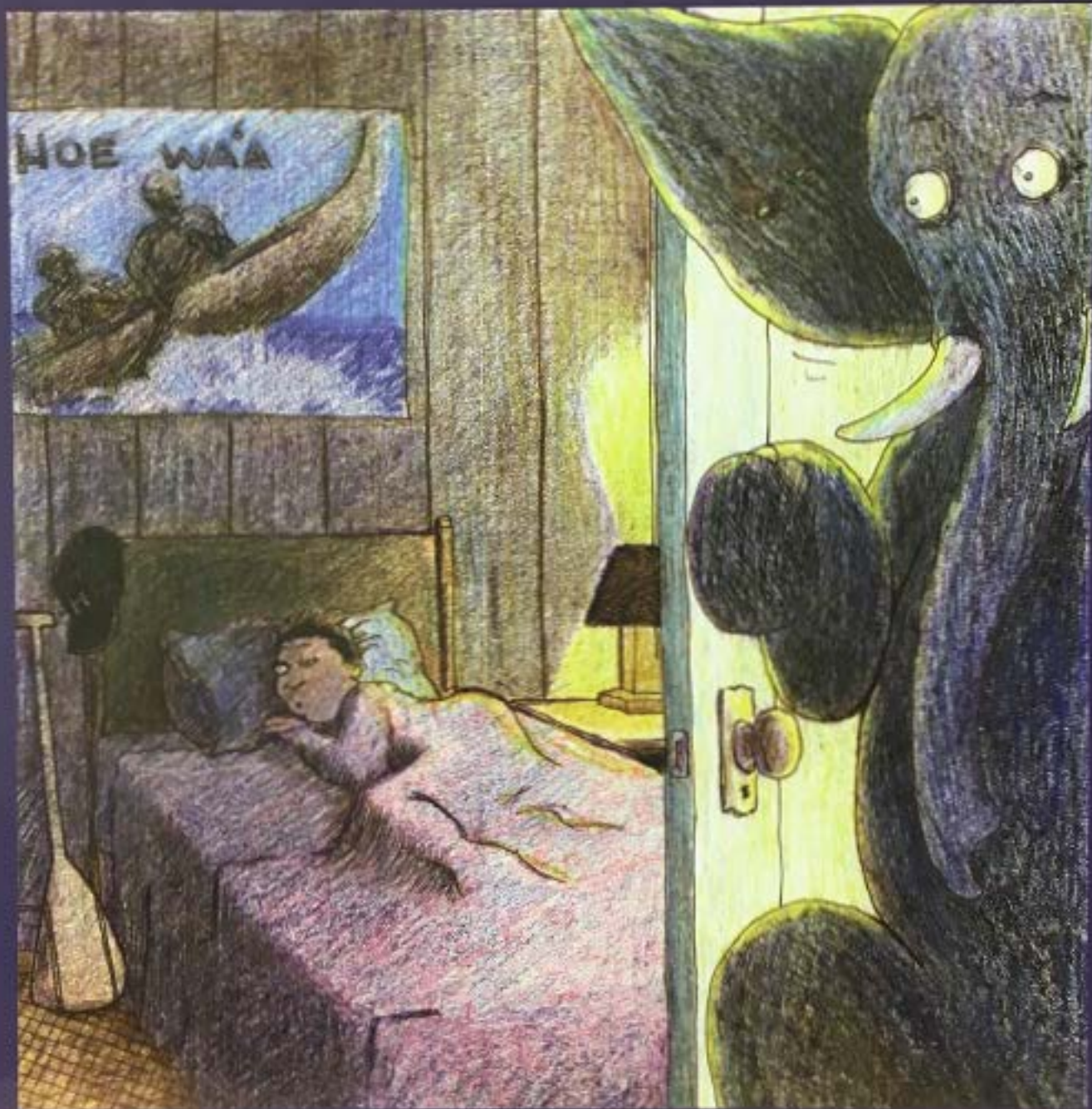


IMPORTANT NOTICE

This document contains copyrighted material. We are making this material available in an effort to support teaching and learning for this Hawaiian Language course, we believe this constitutes a 'fair use' of the material. Please limit the use of this document to include sharing, duplicating, and printing, to the course work and assignments expressly related to this Hawaiian Language class.

If you wish to use this copyrighted material for your own purposes that go beyond 'fair use', you must obtain permission from the copyright owner.

'OIAI AU E HIAMOE ANA . . .



Haku 'ia kēia mo'olelo e

Sam L. No'eau Warner

Kaha 'ia nā ki'i e

Chuck Kawai'olu Souza

E ia nei! E ku'u keiki aloha!

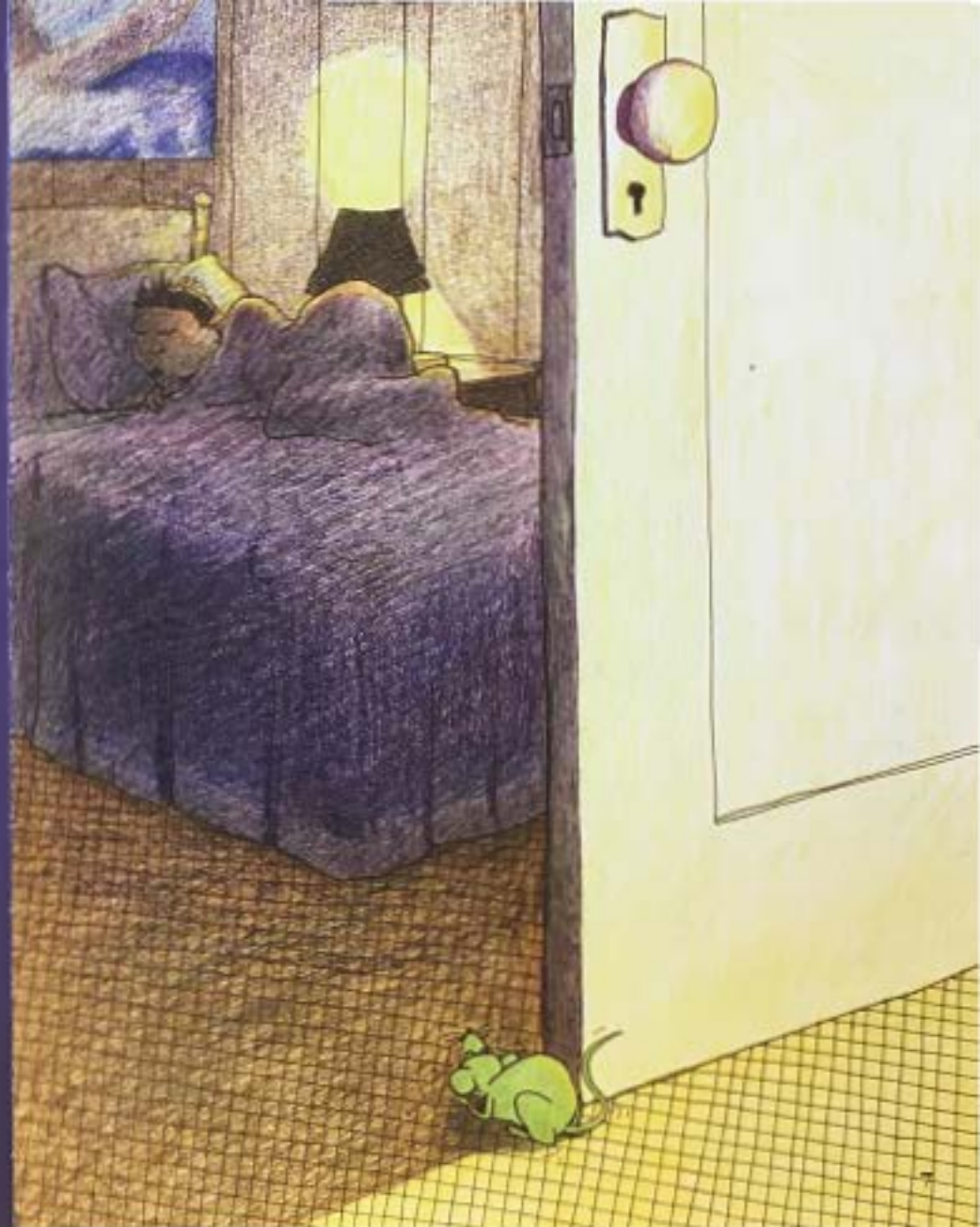
Ua hia'ā 'oe i ka pō!

'A'ole kēia 'o ka hola
e ala ai.

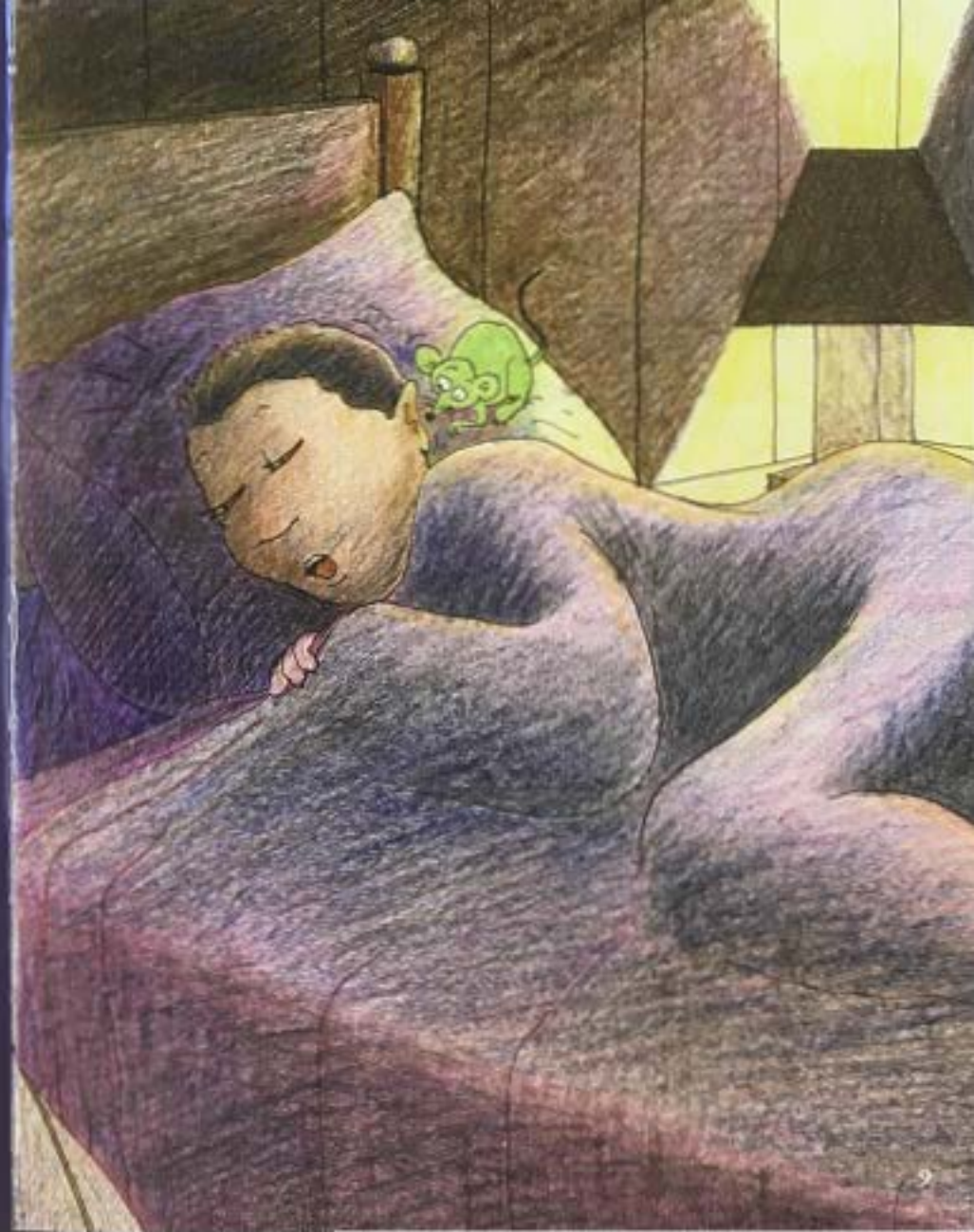
'O ka hola kēia
e hiamoe ai.



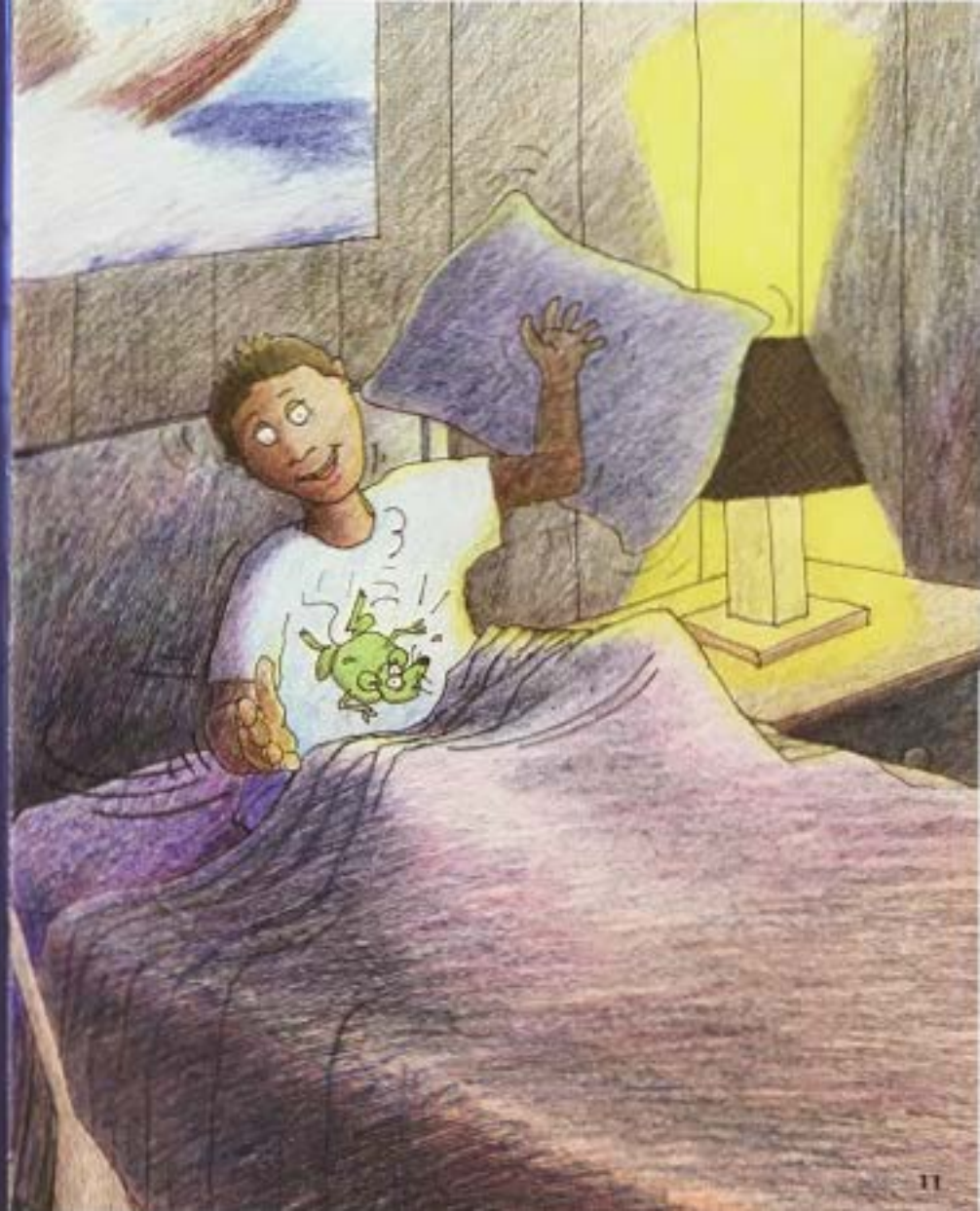
E Pāpā!
Ua nui ka pilikia!
'Oiai au e hiamoe ana,
komo maila kahi 'iole
'u'uku 'ōma'oma'o i ka lumi nei.



Lele maila 'o ia
ma luna o ka uluna nei
a hanuhanu maila
i ko'u pepeiao!



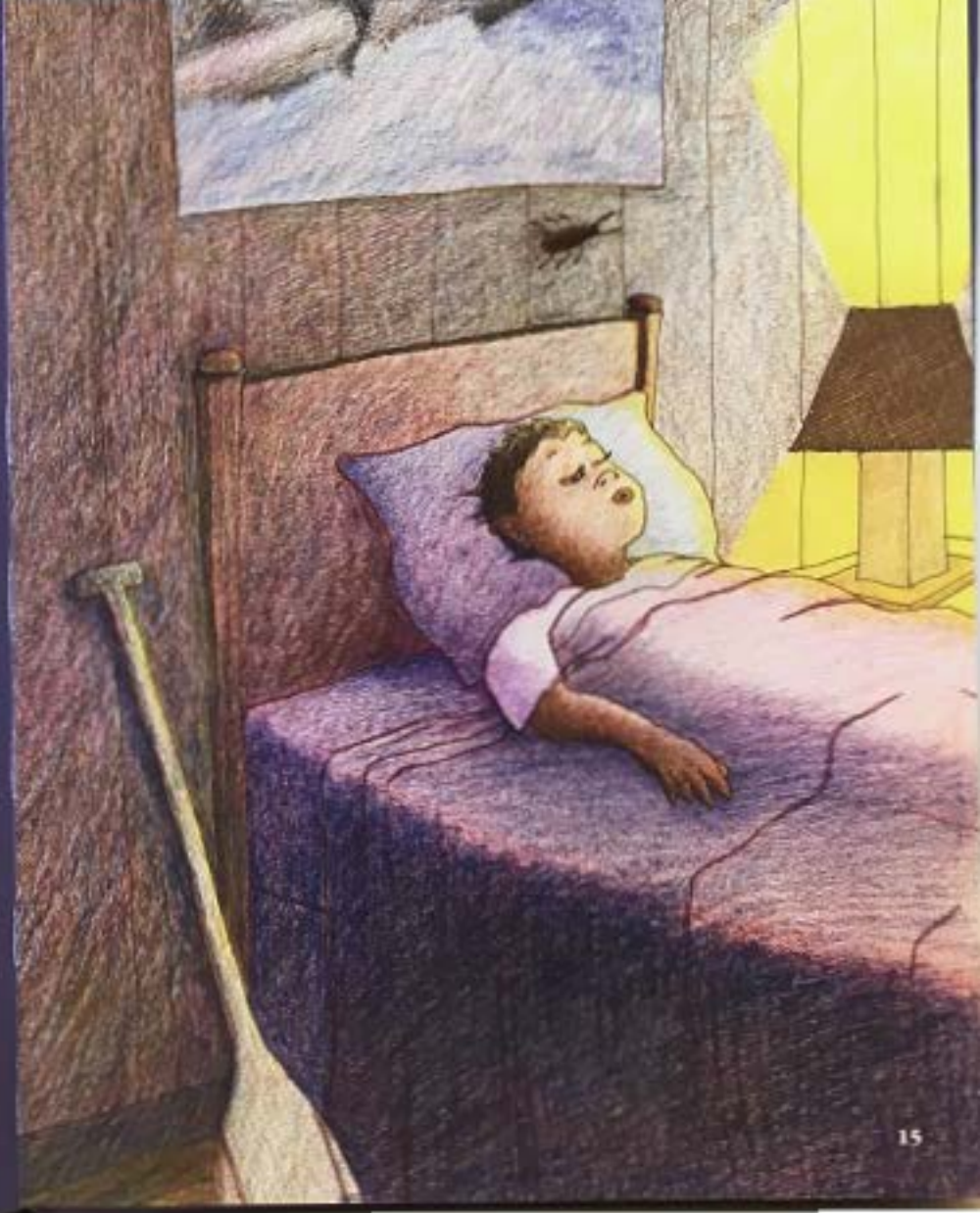
**‘A‘ole ‘emo, ala koke a‘ela au!
A pa‘i akula ko‘u lima pa‘i iā ia!**



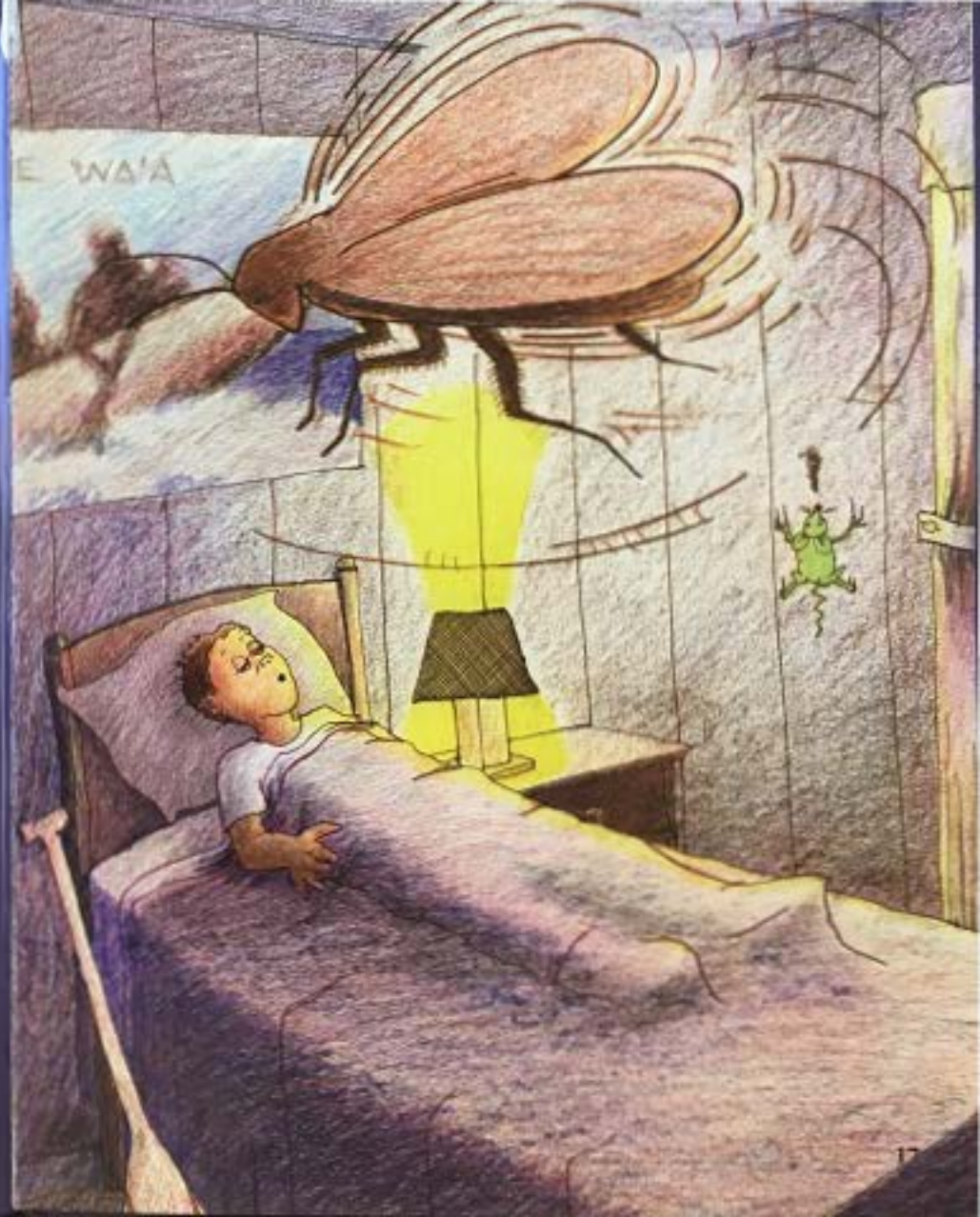
Lele akula 'o ia
me he pōkā lā
a pā akula ka paia!
Ua pau ihola kona pono!



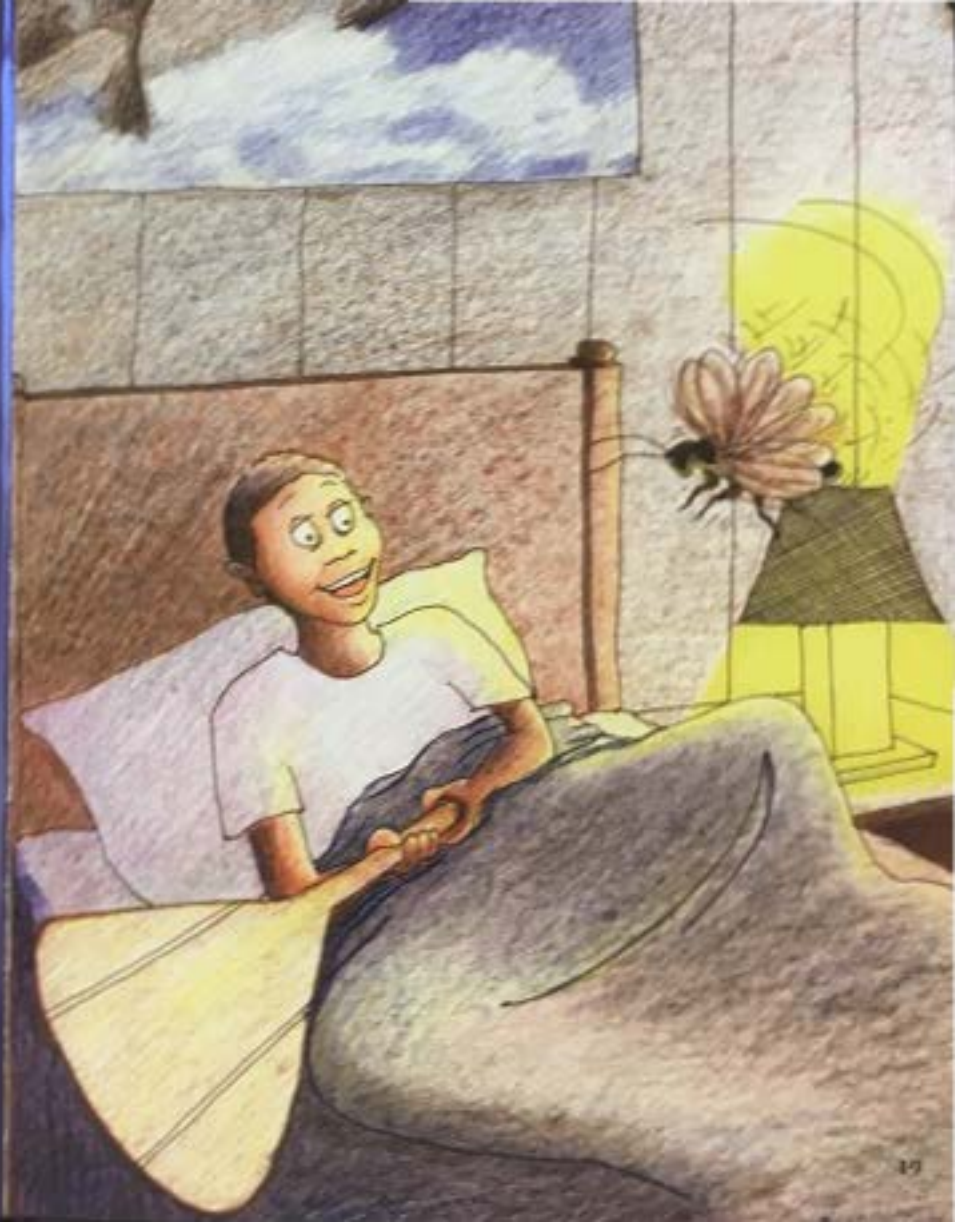
Ma hope mai,
'oiai au e hiamoe ana,
komo malū maila kahi 'elelū
nui 'ula'ula i ka lumi nei.



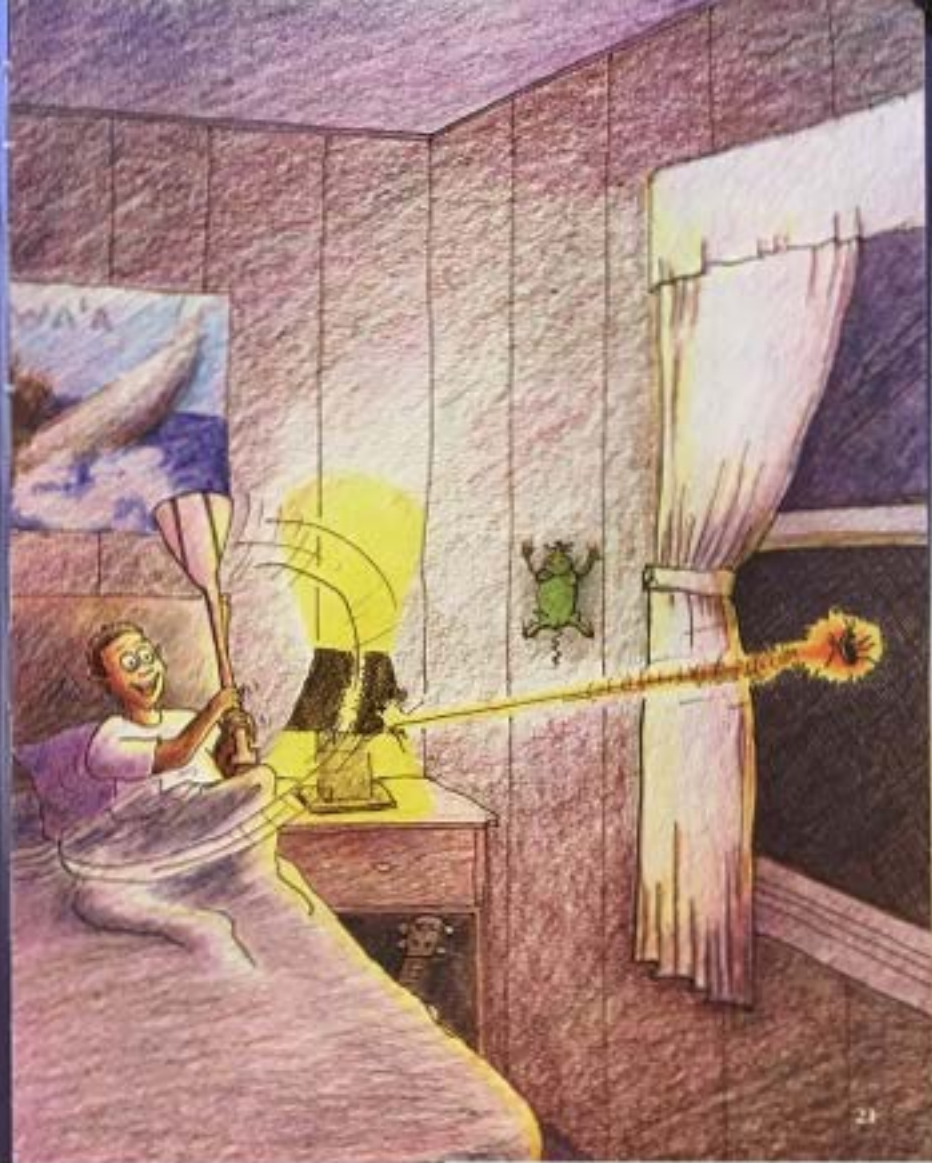
Lele pō'ai maila 'o ia ala
me he mokulele
lū pōkā pahū ala.



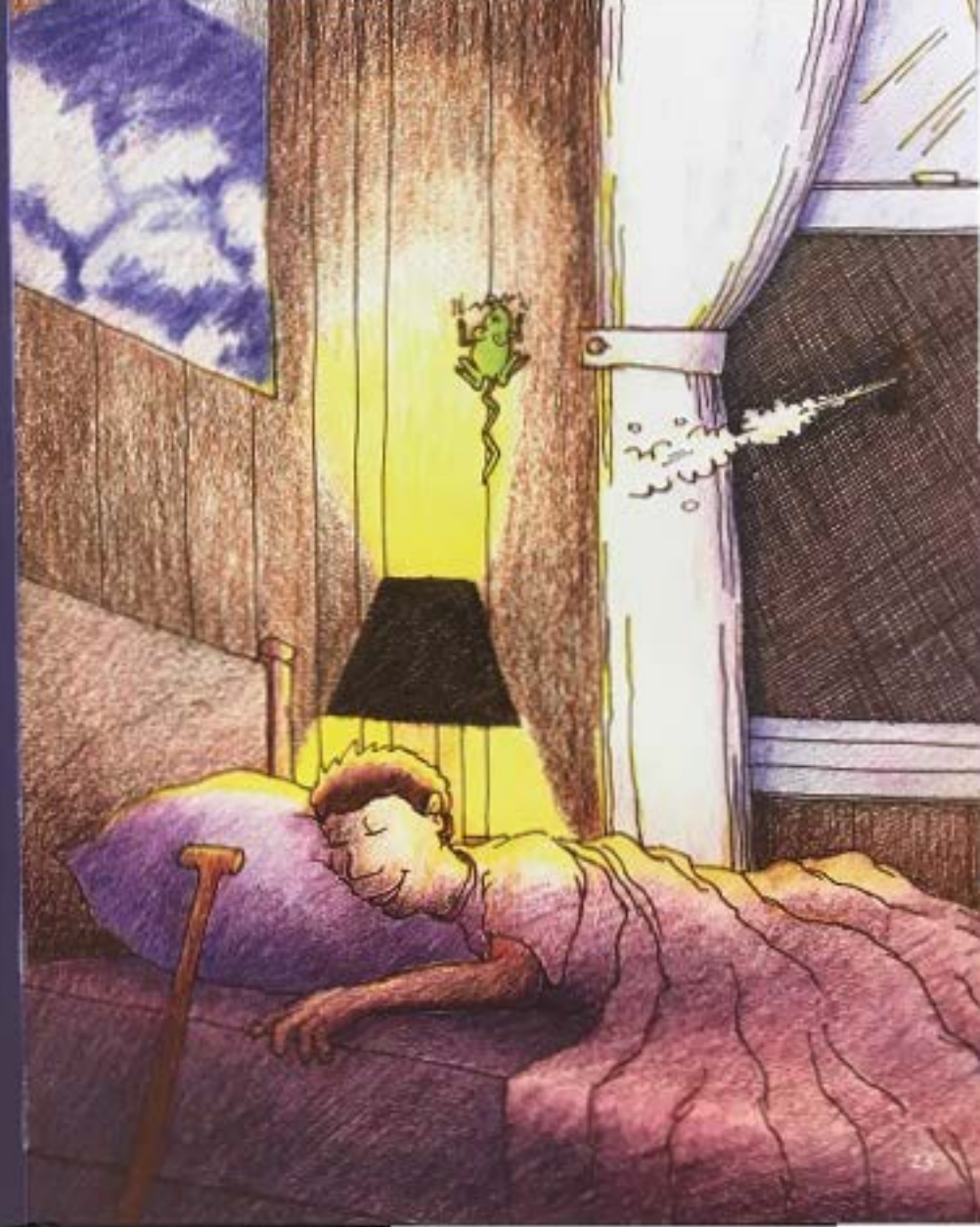
**'A'ole 'emo, ala koke a'ela au!
Hopu akula au i ka hoe . . .**



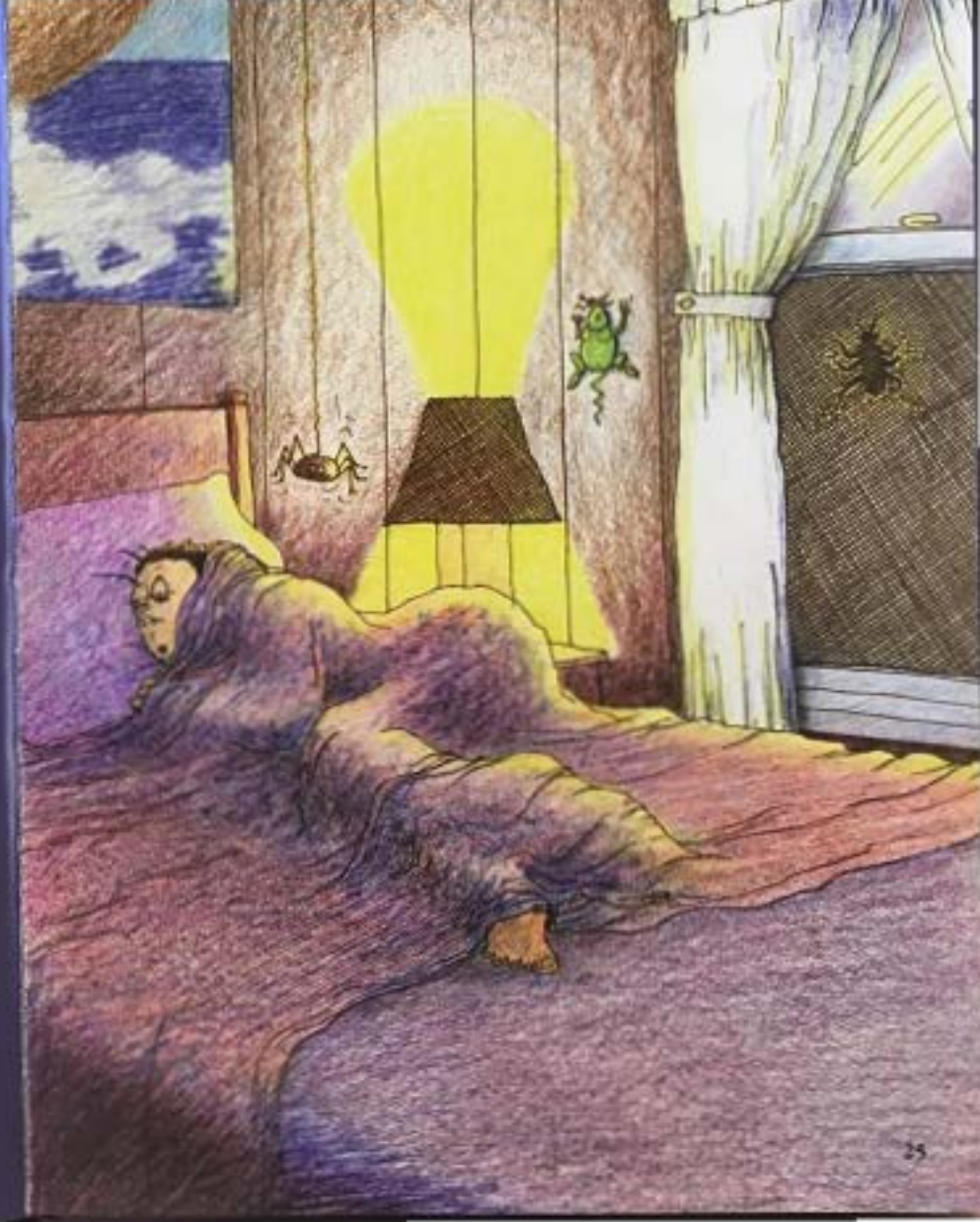
a hili akula iā ia i ka lau hoe!
Lele akula 'o ia
me he akua lele ala . . .



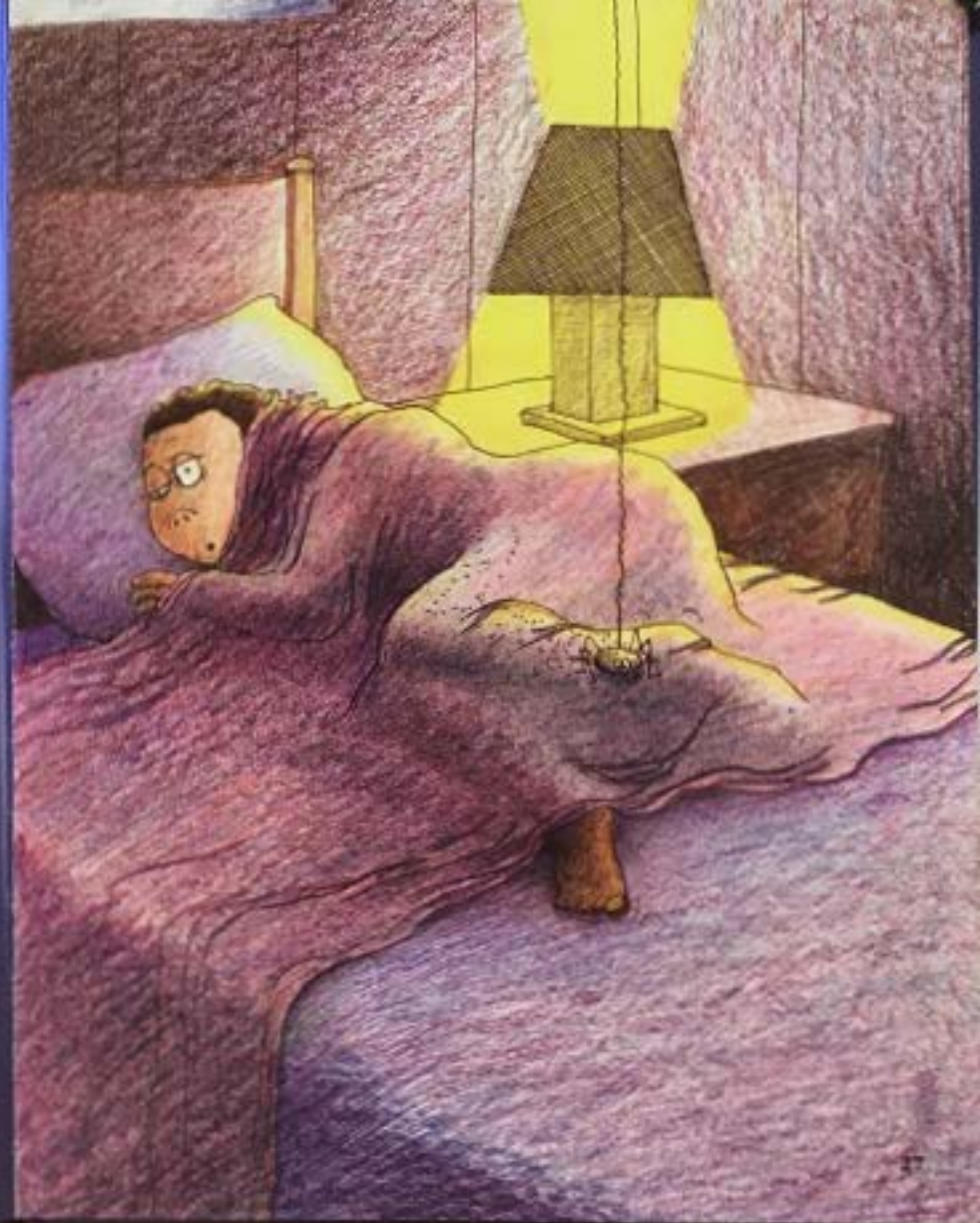
a puka akula i waho o ka uea
makika a nalo akula!
A laila,
ho'i hou au i ka hiamoe.



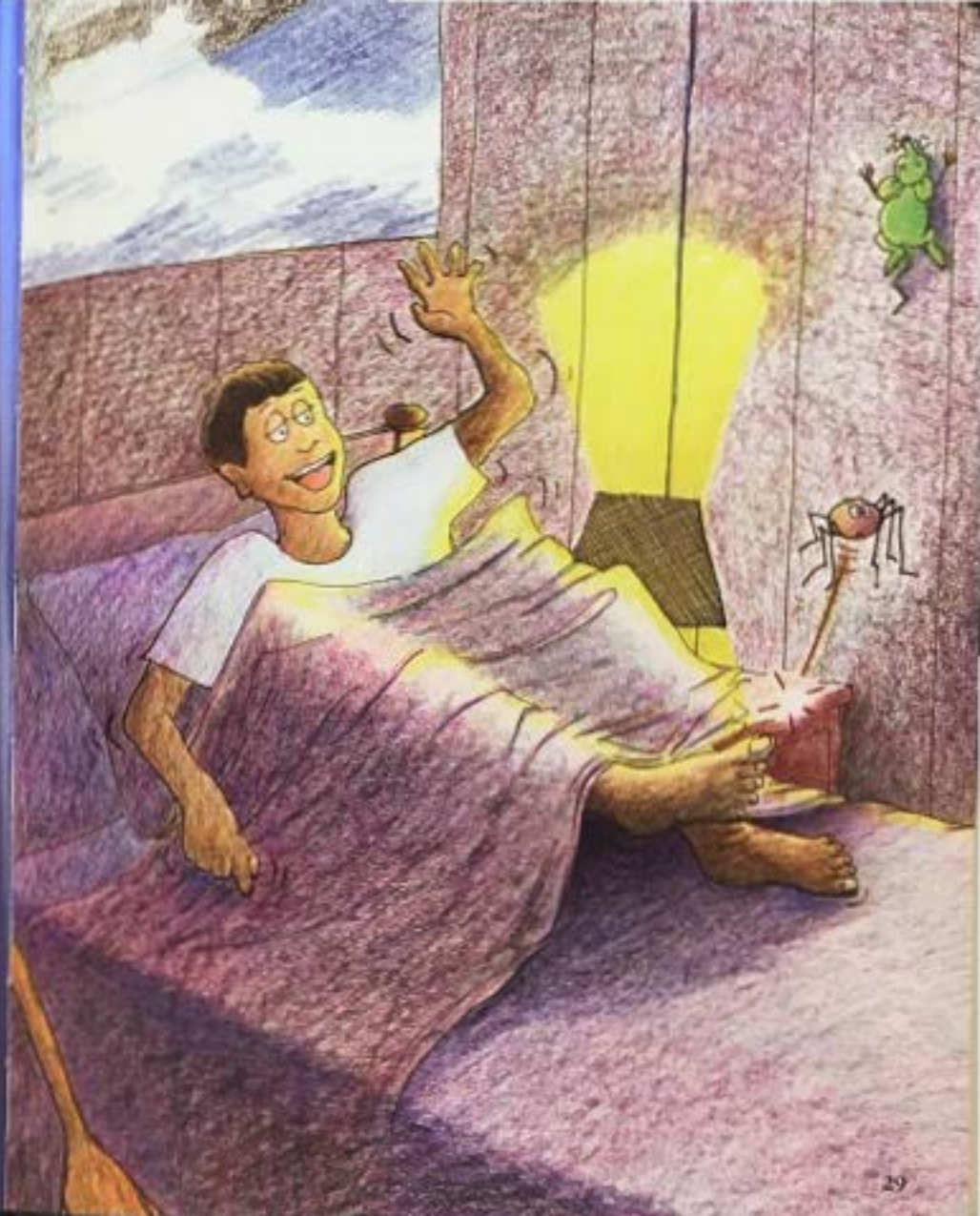
Ma hope mai,
'oiai au e hiamoe ana,
ku'uku'u maila kahi
nananana nui poniponi
mai luna mai o ka huna.



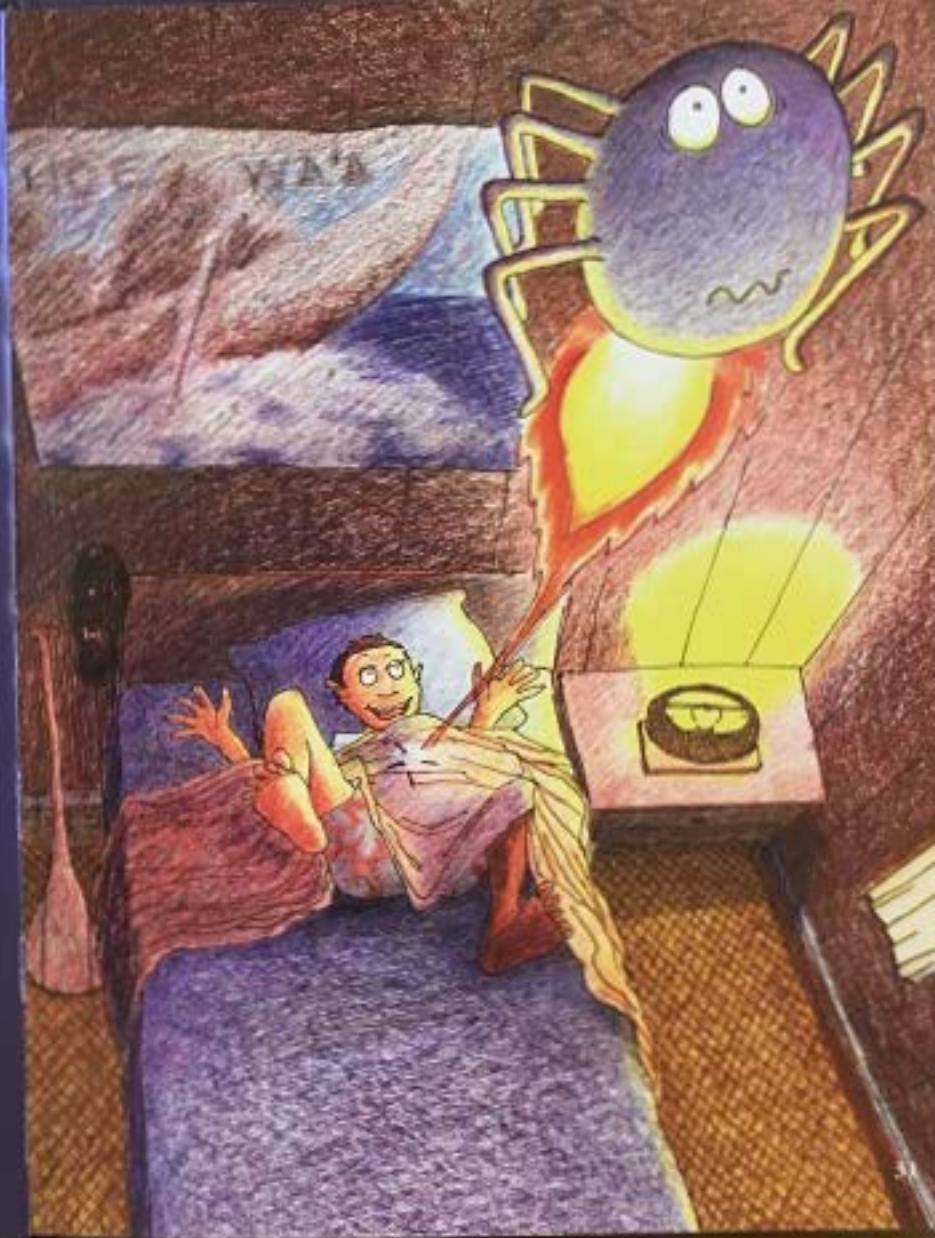
Ku'u ihola 'o ia ma ka uhi pela.
A kolo malū akula
ma kahi o ko'u mau wāwae.



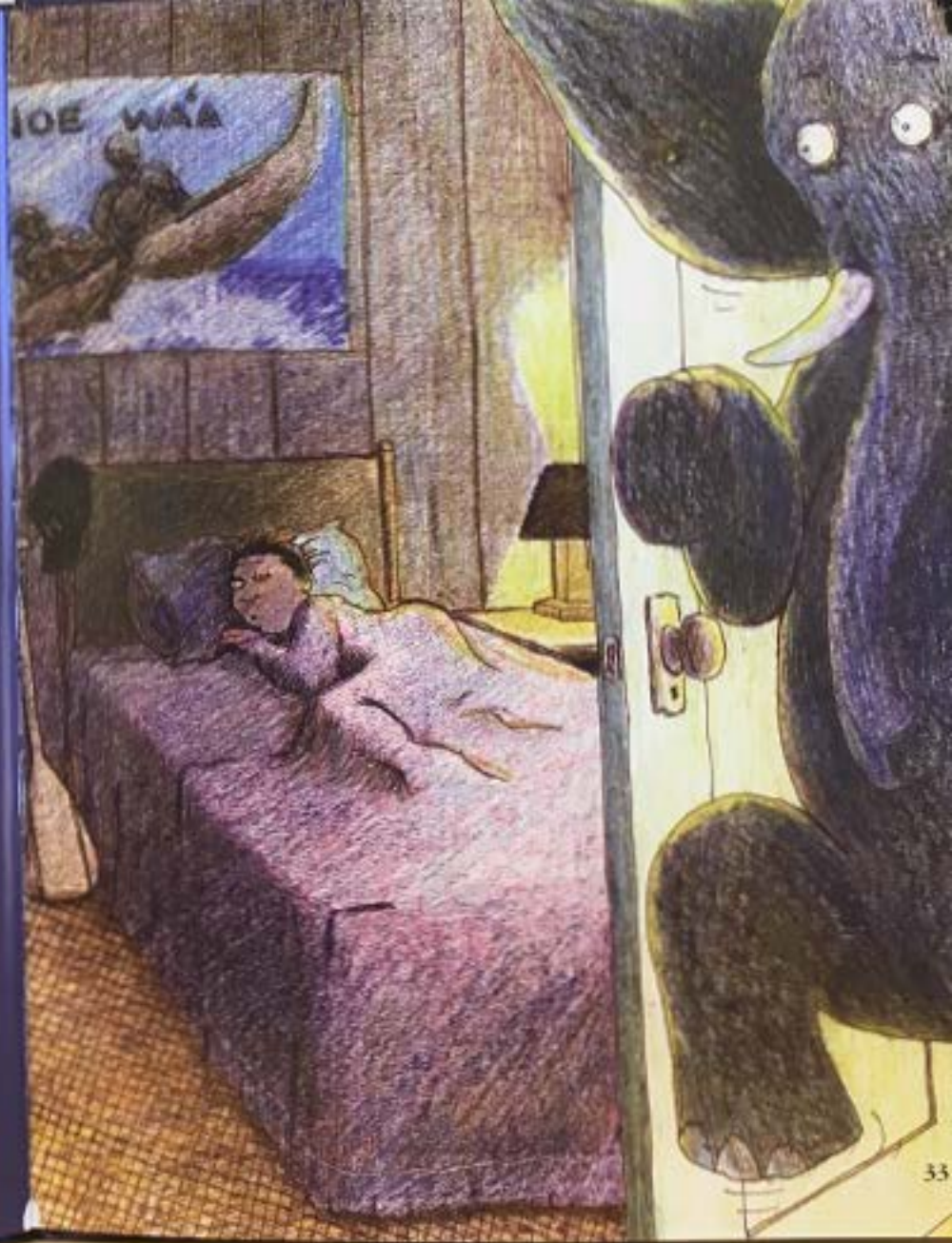
**'A'ole 'emo, ala koke a'ela au!
A peku 'ino a'ela
ko'u wāwae peku!**



Lele a'ela 'o ia i luna
me he ahikao ala
a pā akula ka huna.
A pa'a a'ela nō ma luna o laila!
Ua pau ihola kona pono!



Ma ia hope mai,
'oiai au e hiamoe ana,
komo malū maila kahi
'elepani nui 'āhinahina
i ka lumi nei.



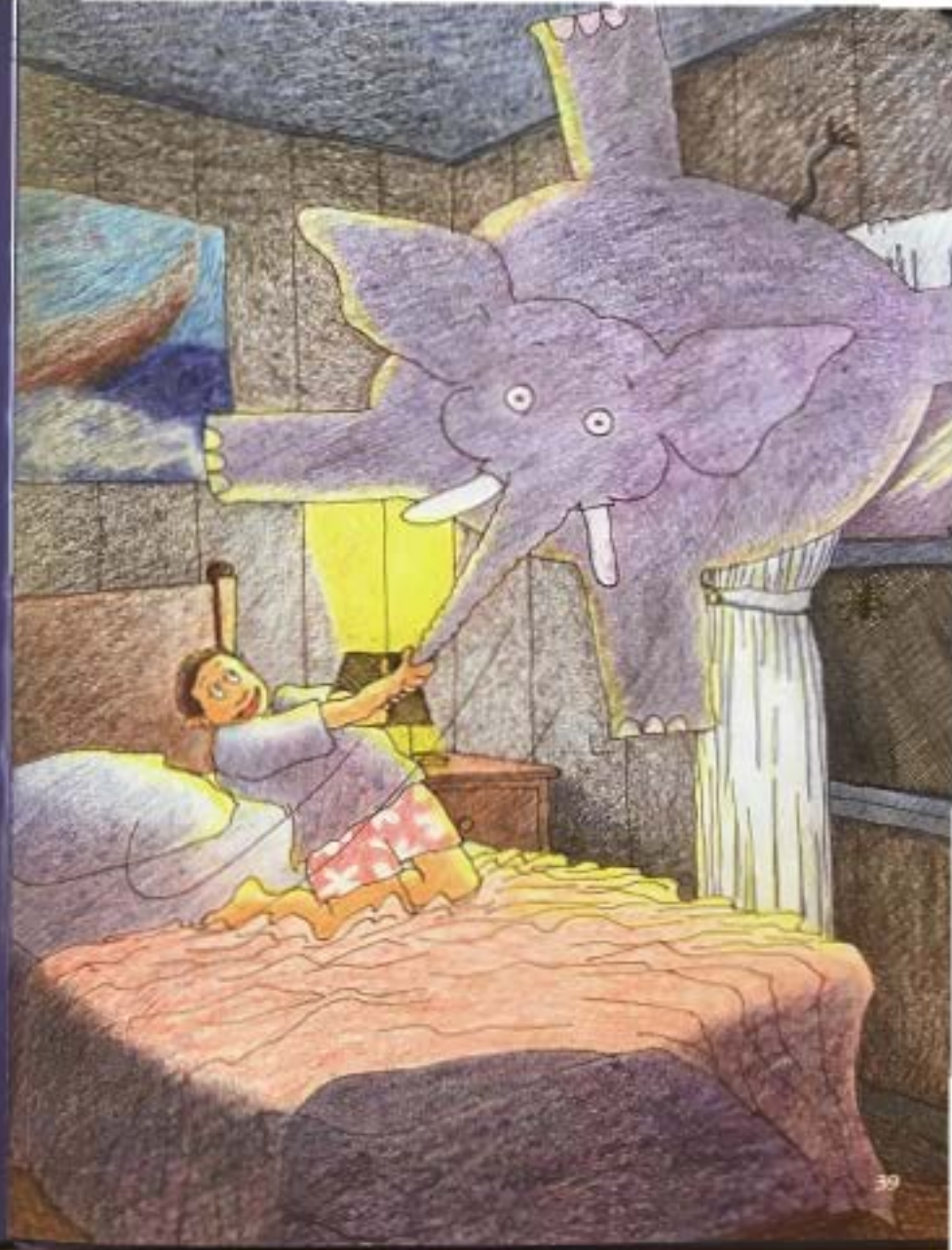
A holo nui maila 'o ia
ma ha'i o ka pela moe,
a kepa maila nā niho loloa ia'u!



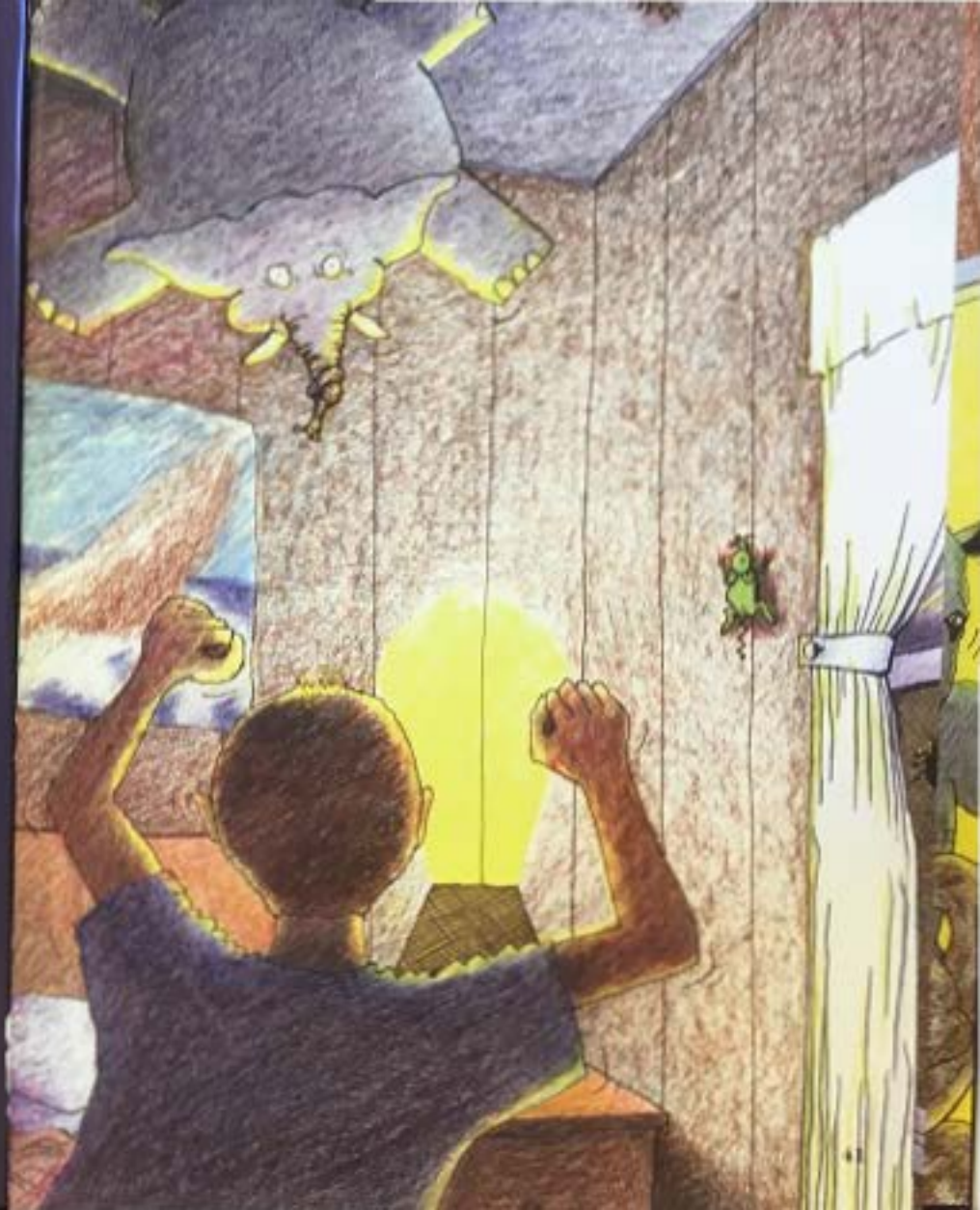
'A'ole 'emo, ala koke a'ela au!
Hopu akula i kona ihu peleleu
a puhi 'ino akula au
me ka ikaika a pau
i loa'a ia'u!



Ua hele a pehu
a pūhalalū kona kino
me he pāluna lā!



A 'oiai au i ho'oku'u aku ai iā ia,
kau a'ela 'o ia i luna o ka lewa
a pili akula i ka huna.



E ia nei, mai hopohopo.
'A'ole lākou he mea maoli.
He moe'uhane wale nō.



Pīpī Holo Ka'ao

